

NEW

# DOLCECLIMA® silent 10 P

DOLCECLIMA SILENT 10 P Code 01920



## FEATURES

- Nominal cooling capacity: 2,6 kW<sup>(2)</sup>
- Energy Class: **A**
- Sound power: **40 dB (A)63**
- Rated energy efficiency index: EER 2,8<sup>(2)</sup>
- Refrigerant gas: R290
- No tank: automatic condensation disposal
- Multifunction remote control
- LCD Display
- Timer 12h
- Practical side handles
- Wheels

## FUNCTIONS

- Fan mode:** Adjustable 3 fan speed. Fan only mode is also available.
- Dehumidification mode**
- Auto mode:** automatic operation which regulates cooling in relation to the ambient temperature to optimize energy consumption.
- Sleep mode:** gradually increases the temperature set and ensures reduced noise for greater wellbeing at night.
- Turbo mode:** Maximum fan speed. Extra cool.



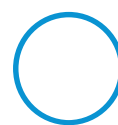
### SILENT SYSTEM

Up to 10%<sup>(1)</sup> quieter at minimum speed.



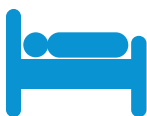
### REMOTE CONTROL

User-friendly remote control. Quick and easy set of all functions.



### TOTAL WHITE DESIGN

Essential design with white nuances, to perfectly fit in every home environment.



### GOODNIGHT SLEEP

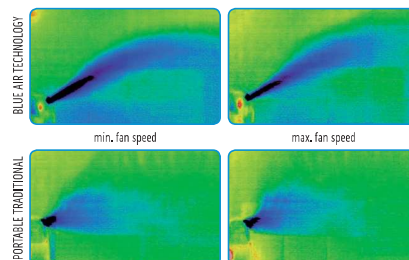


### ADVANCED CONTROL WITH TOUCH DISPLAY

The latest technology aimed to optimize all available features.



### BLUE AIR TECHNOLOGY






### NATURAL REFRIGERANT - R290

The natural refrigerant with the lowest impact on global warming (GWP = 3)

(1) Internal laboratory tests on traditional Olimpia Splendid range  
(2) In accordance with regulation EN14511

## PRELIMINARY DATA

			DOLCECLIMA® SILENT 10 P
Product code			01920
EAN code			8021183019209
Rated output power for cooling (1)	P rated	kW	 2,6
Rated power input for cooling (1)	PEER	kW	0,90
Nominal absorption in cooling mode (1)		A	4,00
Rated efficiency energy ratio (1)	EERd		2,8
Energy Efficiency Class in cooling mode (1)			 A
Thermostat off mode power consumption	POFF	W	1
Standby mode power consumption (EN 62301)	PSB	W	0,5
Hourly electricity consumption for single duct (1) cooling mode	QSD	kWh/h	0,90
Power supply		V-F-Hz	220-240-1-50
Power supply (min-max)		V	198 / 264
Power absorption in cooling mode (1)		W	1100
Maximum absorption in cooling mode (1)		A	5,60
Max. Dehumidification capacity (3)		l/h	1,5
Air flow (max)		m³/h	355
Fan speeds			3
Flexible pipe (length x diameter)		mm	1500 x 120
Maximum remote control range (distance / angle)		m / °	8 / ±80°
Dimensions ( W x H x D ) (without packaging)		mm	396 x 762 x 460
Dimensions ( W x H x D ) (with packaging)		mm	460 x 860 x 496
Weight (without packing)		Kg	28,0
Weight (with packing)		Kg	32,8
Sound power level (indoor only) (EN 12102)	LWA	dB(A)	 63
Sound pressure level (min-max) (2)		dB(A)	38-48
Protection level			IP 10
Refrigerant gas*		Type	R290
Global warming potential of refrigerant	GWP	kgCO2 eq.	3
Refrigerant gas charge		kg	0,23
Maximum operating pressure		MPa	12
Minimum floor area for installation, use and storage		MPa	2,60
Power cable (N° pole x section mm²)			3 x 1,0 / VDE
Fuse			10AT

### LIMITS OF OPERATING CONDITIONS

Indoor Ambient Temperature	Maximum temperature in cooling	DB 35°C - WB 32°C
	Minimum temperature in cooling	DB 17°C
Outdoor Ambient Temperature	Maximum temperature in cooling	DB 43°C - WB 32°C
	Minimum temperature in cooling	DB 18°C - WB 16°C

(1) Test conditions: data refers to regulation EN14511

(2) Declaration of test date in semi anechoic chamber at a distance of 2m, low fan only

(3) Test conditions: 30/27.1°C (DB/WB) in dehumidification mode.

\*Hermetically sealed equipment

Is included a flexible duct to exhaust the air (ø 120 mm, length 1,5 m)